

## The Hekla Tower is inaugurated in Paris La Défense

Paris La Défense, 5 December 2022 • Last Thursday, 1 December, Europe's number one business district celebrated the delivery of the Hekla Tower, whose workspaces offer employees an entirely new office experience. The result of a 10-year collaboration between Ateliers Jean Nouvel and the developers Hines and AG Real Estate in response to a competition initiated by the planner Paris La Défense in 2012, the Hekla Tower was built by Bateg (a subsidiary of Vinci Construction) and acquired by the investors Amundi Immobilier and Primonial REIM France.

The inauguration was attended by **Joëlle Ceccaldi-Raynaud**, Mayor of Puteaux; **Georges Siffredi**, President of Paris La Défense and the Département of Hauts-de-Seine; and **Jean Nouvel**.

### • The first office tower designed by Jean Nouvel in Paris La Défense

Hekla, designed by **Jean Nouvel**, brings a new sense of balance to the skyline of Paris La Défense. In shades of amber, the 49-storey tower culminates at a height of 220 metres. Its façades, made up of 45,000 m<sup>2</sup> of solar control glass, are adorned with polychrome sun screens. They highlight the faceted prismatic composition, inspired by the triangular shape of the building plot.

### • An entire building designed for new ways of working

Hekla was developed to meet office workers' new aspirations for flexibility and comfort in their workplace. Its design also meets the requirements of companies who want their offices to reflect their CSR policy.

A dual level entrance hall with a lower lobby that's 14 metres high, bright indoor spaces, generous



© Thierry Lewenberg-Sturm

volumes with a ceiling height of 2.90 metres, south-west facing outdoor terraces and loggias on each floor, ranging from 15 to 40 m<sup>2</sup>, hanging garden on the rooftop, innovative indoor air treatment system (each floor has a completely separate air system, making it possible to limit the health risks of transmission): so many special features that help to provide a unique workplace experience. Another comfortable privilege: even from the lower floors, the tower's future users can enjoy **panoramic views** of the capital, the business district, Bois de Boulogne, and the western suburbs of Paris.

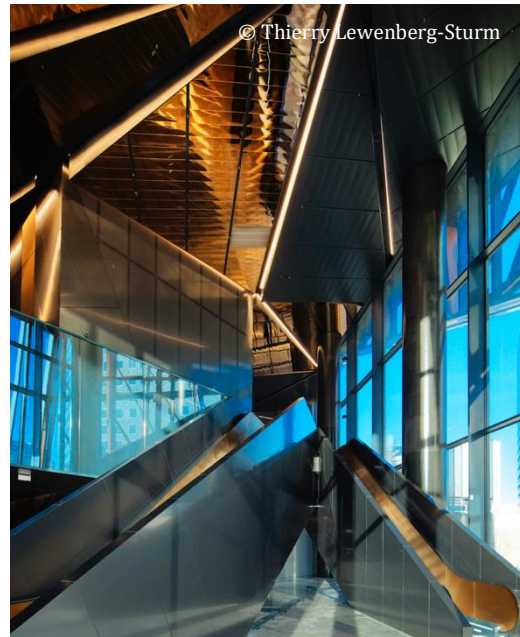
Hekla was designed to house several companies, which can set up their offices in spaces consisting of two or more floors. **Its flexible spaces of approximately 1,700 m<sup>2</sup>** make it possible to have many different layout configurations.

In terms of comfort, the tower is at the forefront of technology and has already obtained the Platinum level **WiredScore** certification.

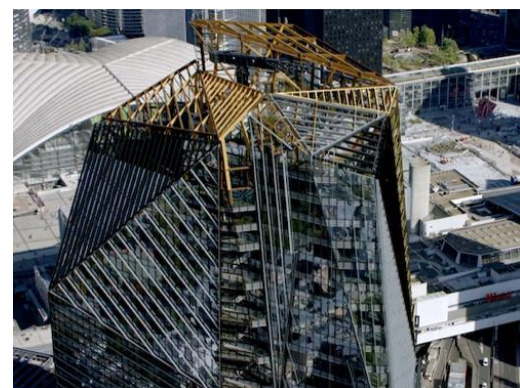
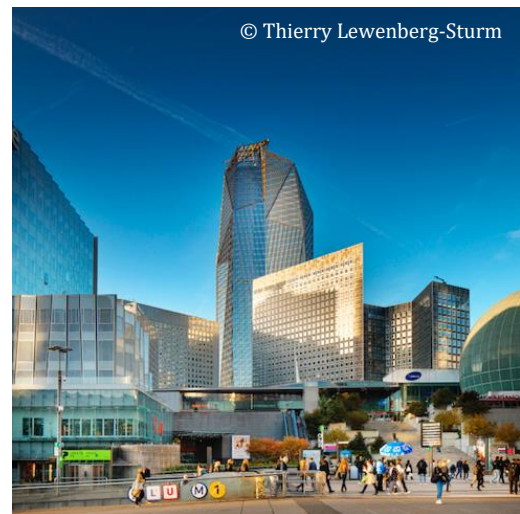
Hekla is accessible in less than 5 minutes on foot from the multi-modal station Cœur Transport - La Défense Grande Arche, located 300 metres away. With its large bike parking lot (600 spaces), the tower also encourages soft mobility (bicycles and scooters). Finally, an extremely rare feature in the business district: Hekla has direct access by car, at 52 Avenue du Général de Gaulle.

- **A project combining land sobriety and reduced environmental footprint.**

As a new building, the Hekla Tower meets the challenges inherent to environmental issues, a key parameter at the heart of a district with the ambition to become the first post-carbon business district in the world. Its very small 1,900 m<sup>2</sup> footprint shows the importance of high-rise buildings, in order to limit the artificialisation of land.



*The mirror-polished stainless steel ceiling in Hekla's lobby echoes the architecture of the tower and its shades of colour.*



© Philippe Guignard, Air Images



Beyond its 650 m<sup>2</sup> roof, 50% of which is green, under a 20-metre-high metal shield, the tower is surrounded by over 2,500 m<sup>2</sup> of accessible outdoor space.

This latest generation tower with unique environmental credentials is aiming for triple certification: **HQE Exceptional**, **BREEAM Excellent** and **LEED Platinum**, as well as the **Effinergie+** certification for its energy efficiency.

#### • Healthy spaces

The tower is exceptionally good at safeguarding the health and well-being of its future users, and thus aims to obtain **Gold level Well** certification. It has a unique air treatment system, managed floor by floor thanks to the installation of independent mini air handling units, thus ensuring a healthy working environment.

#### • A living space in a district that is undergoing major changes

The property complex was designed as a **services hotel** in order to offer its users optimal living and working conditions. Two vast lobbies, a 250-seat auditorium bathed in natural light, a welcome café, concierge services, business centre, five dining options over nearly three floors (modern café, brasserie, kiosks, bistro, food court, etc.), fitness centre, spa area, private function rooms, co-working spaces, sky bar/barista accessible to all on the 47th and 48th floors, a dedicated app: the Hekla Tower offers nearly **7,000 m<sup>2</sup> dedicated to services**.

Located in the immediate vicinity of *Westfield Les Quatre Temps* shopping centre as well as residential buildings such as *Défense 2 000*, the Hekla tower is built in a dynamic mixed environment.

Finally, the tower is the new emblem of a **five-hectare urban district undergoing a complete overhaul**:

#### **La Rose de Cherbourg.**

At the initiative of the public planner, Paris La Défense, the district which opens onto the centre of Puteaux has entered a new phase based on a mix of demographics where nature is given a vitally important role. The location is lively by day and by night. Alongside the Hekla building is a student residence with 400 apartments also designed by Jean Nouvel, which was part of the same competition launched in 2012 by Paris La Défense and won by Hines and AG Real Estate.



At the foot of the Hekla tower, the former ring road will be transformed into a pedestrian walkway planted with trees and shrubs. © L'Autre Image

At the foot of the Hekla tower, the disused ring road has been transformed, inspired by the *High Line* in New York, into a pedestrian walkway 500 metres long, which also has a

cycle path and offers open-air sports and leisure facilities. The 1.3 hectares of hanging gardens will soon become a popular destination in Paris La Défense.

### *About the Hekla Tower*

Hekla is the first office tower designed by Jean Nouvel in Paris La Défense and was co-developed by Hines and AG Real Estate on behalf of Amundi Immobilier and Primonial REIM France. It boasts 6,000 m<sup>2</sup> of offices and services over 49 floors, punctuated by loggias at each level and topped by a sheltered tree-planted roof terrace. Aiming for ambitious certifications and labelling, some of which it has already obtained, it can host up to 5,800 people and offers new workplace experiences under optimal conditions.

For more information please contact:

**Treize Cent Treize – Hekla's Press Service**

Aurélie Caron - Nolwenn Champault - Alain N'Dong

Tel.: 01 53 17 97 13

E-mail: [presse\\_hekla@1313.fr](mailto:presse_hekla@1313.fr)